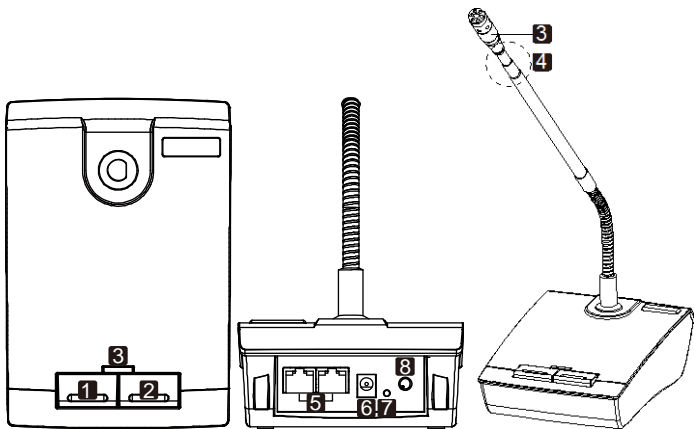


## Parts and functions of GM-143C(T) | GM-143C



1. CHAIRMAN Priority MUTE button: Press to disable talks on other microphones. Press again to recover. Members have to press "TALK" again to speak.

2. TALK button: Press to talk and press again to stop.

**Important!** The microphone automatically mutes after idling for about 5 minutes. Please press TALK button again and continue to speak.

3. TALK LED: It lights up under "TALK" mode and flashes under "MUTE" mode.

4. Telescopic gooseneck. Adjustable from 43cm to 60cm.

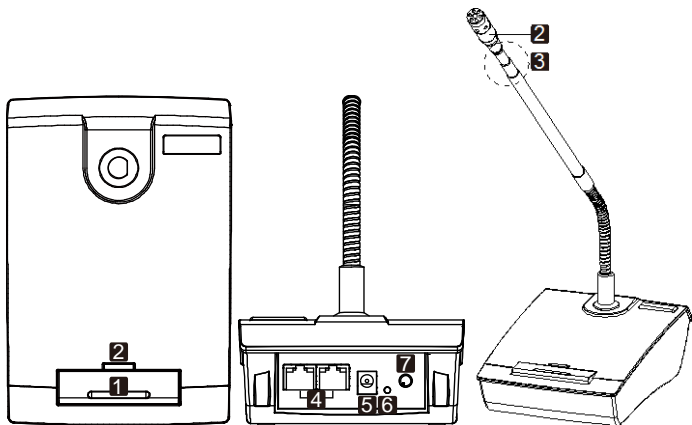
5. Audio input/output connector

6. DC in jack

7. Power indicator

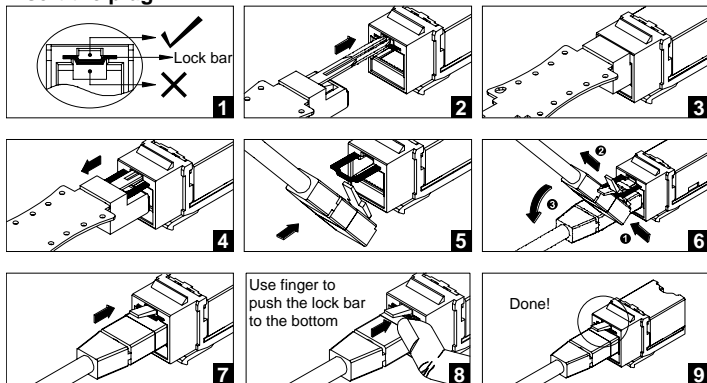
8. Gain control: User can rotate the knob until a desired acoustic quality is acquired.

## Parts and functions of GM-143S(T) | GM-143S

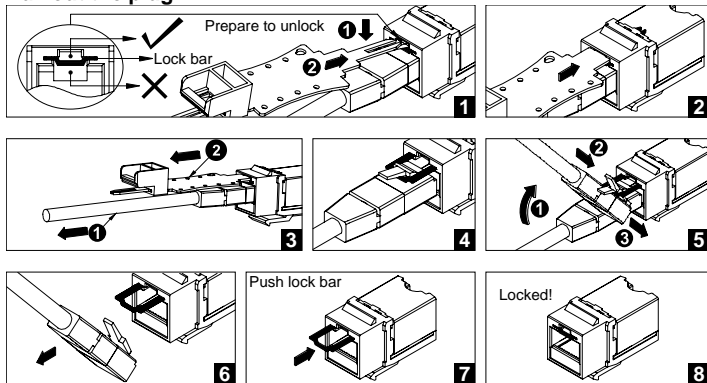


1. TALK button: Press to talk and press again to stop.  
**Important!** The microphone automatically mutes after idling for about 5 minutes. Please press TALK button again and continue to speak.
2. TALK LED: It lights up under "TALK" mode.
3. Telescopic gooseneck. Adjustable from 43cm to 60cm.
4. Audio input/output connector
5. DC in jack
6. Power indicator
7. Gain control: User can rotate the knob until a desired acoustic quality is acquired.

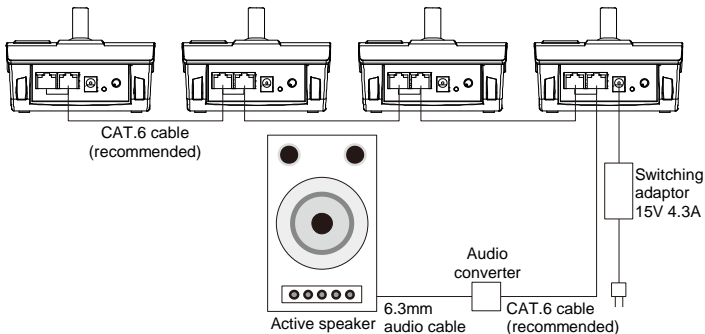
## Insert the plug



## Pull out the plug



## GM-143 System Connection



### Other Instruction

1. The GM-143C(T)/GM-143C/switching adaptor can be located anywhere in the system. The audio converter can be at start or end of system only.
2. With standard 2M CAT.5e/CAT.6 cables, this conference system may consist of up to 60 units, in which only one GM-143C(T)/GM-143C can be installed.
3. The conference system adopts a CAT.5e/CAT.6 network connecting the CHAIRMAN and other microphones to the amplifier with cables and an audio converter.
4. The GM-143C(T)/GM-143C is equipped with speech priority in particular.
5. Each unit, excluding under CHAIRMAN priority mode, will shut off automatically after a five-minute idle.
6. To prevent feedback noise, please adjust the GAIN and the volume before operating the multi-unit conference system.
7. The network cable Cat.5e UTP has to meet TIA/EIA-568-B.2 standards with copper wires of 24AWG-1/0.49A\*4P (CM/UL).

# CHIAYO

**CHIAYO ELECTRONICS CO.,LTD.**

Http://www.chiayo.com.tw | Email: sales@chiayo.com.tw

Office: 30, Lane 27, Section 4, Jen-Ai Road, Taipei 10685, Taiwan | Tel: 886-2-27415741 | Fax: 886-2-27525242

Factory: 88, Chung-Hsiao Street 2, Chiayi 60080, Taiwan | Tel: 886-5-2711000 | Fax: 886-5-5767611